

DISPLAY DEVICES, PLATFORMS, WEIGHING BRIDGES, LOAD CELLS

Laboratory | Industry | Food Industry

PROFESSIONAL MEASURING



2025

KERN Pictograms

CAL INT **Internal adjusting**
Quick setting up of the balance's accuracy with internal adjusting weight (motordriven)

CAL EXT **Adjusting program CAL**
For quick setting up of the balance's accuracy. External adjusting weight required

ET **EasyTouch**
Suitable for the connection, data transmission and control through PC or tablet

MEMORY **Memory**
Balance memory capacity, e.g. for internal data, weighing data, tare weights, PLU etc.

ALIBI **Alibi memory**
Secure, electronic archiving of weighing results, complying with the 2014/31/EU standard.

KUP **KERN Universal Port (KUP)**
allows the connection of external KUP interface adapters, e.g. RS-232, RS-485, SB, Bluetooth, WIFI, Analogue, Ethernet etc. for the exchange of data and control commands, without installation effort

RS 232 **RS-232 Data interface**
To connect the balance to a printer, PC or network

RS 485 **RS-485 Data interface**
To connect the balance to a printer, PC or other peripherals. Suitable for data transfer over large distances. Network in bus topology is possible

USB **USB Data interface**
To connect the balance to a printer, PC or other peripherals

BT **Bluetooth® Data interface**
To transfer data from the balance to a printer, PC or other peripherals

WIFI **WIFI Data interface**
To transfer data from the balance to a printer, PC or other peripherals

SWITCH **Control outputs**
(optocoupler, digital I/O)
To connect relays, signal lamps, valves, etc.

ANALOG **Analogue interface**
to connect a suitable peripheral device for analogue processing of the measurements

DUAL **Interface for second balance**
For direct connection of a second balance

LAN **Network interface**
For connecting the scale to an Ethernet network

KCP PROTOCOL **KERN Communication Protocol (KCP)**
It is a standardized interface command set for KERN balances and other instruments, which allows retrieving and controlling all relevant parameters and functions of the device. KERN devices featuring KCP are thus easily integrated with computers, industrial controllers and other digital systems

GLP INTERN **GLP/ISO log intern**
The balance displays weight, date and time, independent of a printer connection

GLP PRINTER **GLP/ISO log Printer**
With weight, date and time. Only with KERN printers.

PCS **Piece counting**
Reference quantities selectable. Display can be switched from piece to weight

RECIPE A **Recipe level A**
The weights of the recipe ingredients can be added together and the total weight of the recipe can be printed out

RECIPE B **Recipe level B**
Internal memory for complete recipes with name and target value of the recipe ingredients. User guidance through display

SUM A **Totalising level A**
The weights of similar items can be added together and the total can be printed out

PERCENT **Percentage determination**
Determining the deviation in % from the target value (100 %)

UNIT **Weighing units**
Can be switched to e.g. nonmetric units. See balance model. Please refer to KERN's website for more details

TOL **Weighing with tolerance range (Checkweighing)**
Upper and lower limiting can be programmed individually, e.g. for sorting and dosing. The process is supported by an audible or visual signal, see the relevant model

MOVE **Hold function**
(Animal weighing program)
When the weighing conditions are unstable, a stable weight is calculated as an average value

IP **Protection against dust and water splashes IPxx**
The type of protection is shown in the pictogram

UNDER **Suspended weighing**
Load support with hook on the underside of the balance

BATT **Battery operation**
Ready for battery operation. The battery type is specified for each device

ACCU **Rechargeable battery pack**
Rechargeable set

MULTI A **Universal plug-in power supply**
with universal input and optional input socket adapters for
A) EU, CH, GB
B) EU, CH, GB, US
C) EU, CH, GB, US, AUS

230 V **Plug-in power supply**
230V/50Hz in standard version for EU, CH. On request GB, USA or AUS version available

230 V **Integrated power supply unit**
Integrated in balance. 230V/50Hz standard EU. More standards e.g. GB, USA or AUS on request

DMS **Weighing principle Strain gauges**
Electrical resistor on an elastic deforming body

T-FORK **Weighing principle Tuning fork**
A resonating body is electromagnetically excited, causing it to oscillate

FORCE **Weighing principle Electromagnetic force compensation**
Coil inside a permanent magnet. For the most accurate weighings

SC TECH **Weighing principle Single cell technology**
Advanced version of the force compensation principle with the highest level of precision

M +3 DAYS **Conformity Assessment**
The time required for conformity assessment is specified in the pictogram

DAkkS +3 DAYS **DAkkS calibration possible (DKD)**
The time required for DAkkS calibration is shown in days in the pictogram

ISO +4 DAYS **Factory calibration (ISO)**
The time required for Factory calibration is shown in days in the pictogram

1 DAY **Package shipment**
The time required for internal shipping preparations is shown in days in the pictogram

2 DAYS **Pallet shipment**
The time required for internal shipping preparations is shown in days in the pictogram

KERN Models A-Z

572	31
A	
ABP	50-51
ABP-A	52
ABT-NM	48
ACS / ACJ	46-47
ADB / ADJ	43
ADS / ADT <small>NEW</small>	49
ALS-A / ALJ-A	44-45
B	
BFC	120-121
BIC	117
BID	118-119
BXC <small>NEW</small>	122
C	
CB Q1 / CB Q2 / CB P1	156
CCA	90-91
CCS	92-93
CDS	89
CE Hx	134
CFS	86
CH	165
CIB	83
CJ P / CJ X	159
CKE	87
CO Y1 / CO Y2 / CO Y5	158
CP P4 / CP Y4 / CP P1 / CP Y1 / CP P3	153
CP P2 / CP P7 / CP P8	154
CR Q1 / CR P1 / CR Y1	155
CT Q1 / CT P1 / CT P2	157
CPB	85
CXB/CXB-NM	84
D	
DAB	54
DBS	55
DE	102-103
DLB	56
DS	111
E	
ECB-N / ECE-N	59
EFS	11
EHA	15
EMB	12
EMB-V	13
EMS	14
EOB	100
EOC	104-105
EOE	99
EOS	101
EW-N / EG-N	34
EWJ	30

F	
FCB	61
FCE-N	60
FCF	67
FES / FEJ	40
FFN	72
FGE	66
FKB	62
FOB-LM	68
FOB-S / FOB-NS	69
FOB / FOB-NL	70
FXN / FXN-M	73

H	
HCB	167
HCD	169
HCN	168
HDB-N / HDB-XL	166
HFA	170
HFC	171
HFD	172-173
HFM	174

I	
IFB	110
IFC	108-109
IFS	88
IOC	106-107
IXC	112-113

K	
KBP-V20 IP65	148
KDP	135
KFA-V20	150
KFB-TM	145
KFC-TM	146
KFD-V20	149
KFD-V40 IP68	151
KFN-TM	145
KFP-V20 IP65	148
KFP-V20 IP67	149
KFP-V30	150
KFP-V40 IP68	151
KFS-TM	144
KFU-V20	150
KFU-V30	150
KGP	132
KIB-TM	145
KIP-V20M	149
KXC-TM	147
KXP-V20 IP65	148

N	
NFC <small>NEW</small>	129
NIB	128
NXC <small>NEW</small>	130

P	
PBJ / PBS	37
PCB	26-27
PCD	24
PCJ	28-29
PDS / PDT	38-39
PEJ / PES	36
PFB	25
PLJ / PLS	32
PNS / PNJ	33
PWS	35

R	
RIB	78
RPB	79

S	
SCD-4.0	179
SCD-4.0-PRO	180
SFB / SFB-H	76
SFE	114
SXC	74-75

T	
TGC	9
TGD	9

U	
UFA	123
UFC <small>NEW</small>	126
UIB	124
UID	125
UXC <small>NEW</small>	127

V	
VHB	161

W	
WTB	71

Y	
YKV	133
YRO-01 / -02 / -03	185



KERN Quick-Finder

How I quickly find the product I am looking for

Ahead of each product group allows you to base the search for a certain target group on weighing data you need such as readout, weighing capacity and main features for each model.

And it's as simple as that – find the product you want in 2 steps:

1. Go to the product group index on page 3
2. Pick the appropriate product group and find the product you want using the Quick-Finder

The individual KERN steps:

	Weighing capacity	Model	Price excl. of VAT, ex works €
1. Proof of compatibility This is mandatory by law and includes testing by using type approvals, whether the connection values of the display device match the connection data of the weighing unit.	0 up ... kg	KERN	
	all Weighing capacities	965-240	49,-
2. Assembly After testing for suitability using the proof of compatibility, the weighing system will be hard wired by KERN. The weighing system will then be tested in accordance with regulations of 2014/31/EU, the European directive for non-automatic weighing instruments and prepared for conformity assessment.	up ≤ 50 kg	965-411	84,-
	up ≤ 350 kg	965-412	119,-
	up ≤ 1500 kg	965-413	143,-
	up ≤ 2900 kg	965-414	178,-
	up ≤ 6000 kg	965-415	300,-
3. Initial verification by the manufacturer Conformity assessment ("Initial verification by the manufacturer") KERN is authorised to carry out the conformity assessment ("initial verification by the manufacturer") in accordance with 2014/31/EU, the European directive for non-automatic weighing instruments and is therefore authorised to introduce the weighing system onto the market, after the test has been carried out successfully and the conformity mark has been affixed.	up ≤ 5 kg	965-227	65,-
	up ≤ 50 kg	965-228	84,-
	up ≤ 350 kg	965-229	110,-
	up ≤ 1500 kg	965-230	158,-
	up ≤ 2900 kg	965-231	178,-
	up ≤ 6000 kg	965-232	235,-
4. Declaration of conformity KERN issues this after the initial verification by the manufacturer Conformity assessment has been carried out successfully and sends it with the weighing system at no additional cost, and it can be used in areas regulated by law.			

Modifications and special services

Description	Model	Price excl. of VAT, ex works €
	KERN	
Cable extensions for platform scales		
up to 4 m extension	965-403	54,-
up to 7 m extension	965-404	71,-
up to 20 m extension	965-405	89,-
Individual settings		
Scale with NAWI conformity evaluation, only in combination with KERN 965-240	965-401	60,-
Other adjustments in the balance or software changes	965-407	113,-/h
Plug connection (replaces the fixed cable connection between the display device and platform with a plug connection which can be disconnected)		
Balances with type approval and verification (according to time spent)		only possible with separable, verifiable plug connection with identification chip (e.g. KERN KIB-A12), for the corresponding models (e.g. IOC, BID, UID) please order when purchasing
Balances with type approval, no verification	965-406	71,-

! Delivery time for modifications & special services approx. 5-8 working days

Order example

	Model	Price excl. of VAT, ex works €
KFP 30V20M platform and KEN-TM display device with cable extension (4 m) and setting an individual preload.	KERN	
KERN platform	KFP 30V20M	315,-
KERN display device	KFN-TM	360,-
Proof of compatibility	965-240	49,-
Cable extension	965-403	54,-
Setting the preload	965-401	60,-
Assembly	965-411	84,-
Verification at the factory KERN	965-228	84,-
Complete scale (verified)		1006,-

NOTHING IS IMPOSSIBLE – KERN CUSOS

Perfectly working weighing solutions with customized platform sizes, specific software solutions and coordinated peripherals – to suit your processes.

Our KERN Customized Solution Service offers maximum freedom of choice – give it a try.

Zoologischer Garten Schwerin/Sven P. Peter



KERN CUSOS – Perfectly tailored to you and your requirements

Powerful balances and efficient weighing systems which support you in your work, should be adapted to your individual requirements. Standard models are therefore not sufficient under some circumstances.

For this reason, at KERN it is our pleasure to work with you to develop a solution which is appropriate and tailor-made for you. From a range of platform sizes through to personalised weighing systems within large production plants, we can provide the right measuring technology.

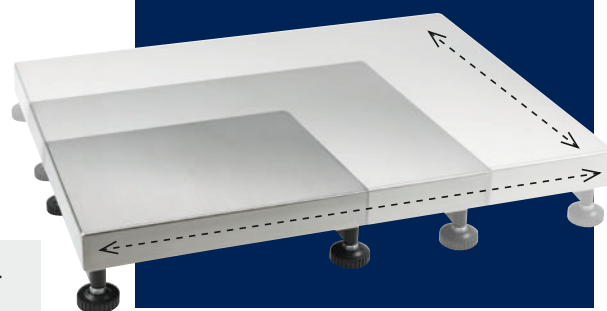
Through close collaboration with your engineers and users, we first check the special requirements for your application. Using this data we will put together the appropriate platform scale, floor scale or a completely personalised weighing system for you, to fit your requirements perfectly.

Tip: Save money and ask our experts. Maybe your desired combination is already included in our standard range?



CUSTOMIZED
SOLUTION SERVICE

For details scan QR Code:





For perfect integration into existing and newly configured processes: individual platform construction in individual formats



Ideal for customised requirements



From horses to rhinos – weighing large animals is child's play with our tailor-made solutions



Your advantage – you have the choice

Choose from a wide range of display devices. Economical and lightweight (plastic version), robust and water-resistant (stainless steel version), with numeric key pad, battery or mains operation or the most varied interfaces.

Load cells to construct automatic weighing systems such as filling or dosing systems, such as might be used, for example, in manufacturing or filling processes in the chemical industry, construction industry, mineral industry, etc.

On many occasions, load cells are also used in the construction of checkweighers or for installation into packaging machines of any type in the food industry.

The weighing data can be forwarded to peripheral devices such as signal lamps, printers and laptops or be used to switch valves, or similar devices.

What's your individual requirement?

Just tell us the size you want and the material you want for your platform and other essential construction details – done! We'll take care of the implementation.

Following you will find a selection of our platforms, load cells and evaluation devices – the starting point for your individual system solution!

Our competent CUSOS team is at your disposal and is looking forward to your project:

Tel: +49 7433 9933-570

E-Mail: cusos@kern-sohn.com



Max Matthes



Fabian Brenner



Further information and products:
www.kern-sohn.com

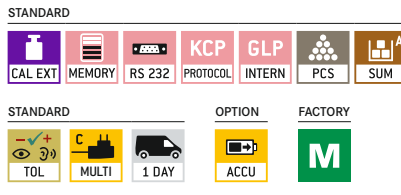
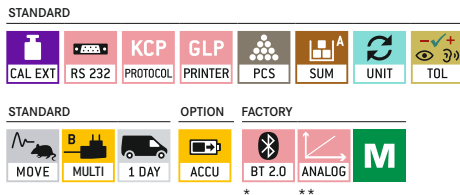


1 KERN KFB-TM

Display device with large digits – easy to read and optional analogue output for controlling systems (PLC) etc.

2 KERN KFS-TM

Professional indicator with 3 displays, also with EC type approval [M]



Features	Model KERN 1 KFB-TM	Model KERN 2 KFS-TM
Display (segments)	5 + ½ digits	6 digits
EC type approval	yes	yes
Resolution verifiable	6000 e	3000 e
Resolution non verifiable	30000 d	60000 d
Weighing capacities	≤ 2	≤ 2
Weighing units	kg, lb	kg, g
Readability	1, 2, 5, 10, n	1, 2, 5, 10, n
Piece counting with reference	10, 20, 50, 100, 200	n
Display, digit height	Backlit LCD display, 52 mm	Backlit LCD displays, 13/16,5 mm
Additional functions	Totalising, HOLD function, Integrated KERN Communication Protocol (KCP), ideal for connecting an Merchandise Management or ERP system, Compatible with the KERN EasyTouch App	99 item memories, totalising, printing of date and time, Integrated KERN Communication Protocol (KCP), ideal for connecting an Merchandise Management or ERP system, Compatible with the KERN EasyTouch App
Strain gauge load cells	87 – 1600 Ω	87 – 1600 Ω
Linearisation	3 points	4 points
Input voltage	12 V, 500 mA	12 V, 500 mA
Permissible ambient temperature	-10 °C/40 °C	0 °C/40 °C
Interface RS-232	yes	yes
2. Interface RS-232, separate Y cable	CFS-A04, € 38,-	CFS-A04, € 38,-
Interface RS-485	-	-
Interface USB	-	-
Interface Bluetooth	KERN KFB-A03, € 160,-	-
Analogue module	0-10V: KERN KFB-A04, € 170,-; 4-20 mA: KERN KFB-A05, € 170,-;	-
Signal lamp	CFS-A03, € 310,-	CFS-A03, € 310,-
Foot switch	-	-
Stand	BFS-A07, € 170,-	BFS-A07, € 170,-
Benchtop stand for display device/wall mount	yes/yes	yes/yes
Protective working cover	KFB-A02S05, € 52,-	KFB-A02S05, € 52,-
Rechargeable battery pack	KFB-A01, € 40,-	KFB-A01, € 40,-
Operating/charging time	up to 35 h/12 h	up to 40 h/12 h
Dimensions Housing W×D×H	250×160×65 mm	260×150×65 mm
Net weight	1,2 kg	1,5 kg
Price, excl. of VAT, ex works, €	260,-	280,-

* not possible in combination with verification. When installing the Bluetooth data interface, the RS-232 data interface can no longer be used

** not possible in combination with signal lamp. When installing the analogue module, the RS-232 data interface can no longer be used



3 KERN KIB-TM

Practical Flip/Flop Display device for greatest ease of use

Features

- Practical Flip/Flop display device: flexible positioning e.g. free-standing or screwed to the wall (optional). By rotating the upper housing shell you can determine the angle of the display as well as the cable outlet. Factory Option ex works for an additional cost, delivery time + 2 working days, KERN KIB-M01, € 104,-
- Industry 4.0: A large number of (optional) data interfaces enable convenient transferring weighing data to tablets, laptops, PCs, networks, smartphones, printers, etc.
- Searching and remote control of the balance using external control devices or computers with the KERN Communication Protocol (KCP).

4 KERN KFN-TM

Stainless steel display device with IP65 protection and superior display size and optional analogue output for controlling systems (PLC) etc.

STANDARD												OPTION		
FACTORY														

* Note: In addition to the RS-232 data interface, which is integrated as standard, only one other data interface can be installed and operated

Features	Model KERN 3 KIB-TM***	Model KERN 4 KFN-TM
Display (segments)	6 digits	5 + 1/2 digits
EC type approval	yes	yes
Resolution verifiable	6000 e	6000 e
Resolution non verifiable	60000 d	30000 d
Weighing capacities	≤ 2	≤ 2
Weighing units	kg, g	kg
Readability	1, 2, 5, 10, n	1, 2, 5, 10, n
Piece counting with reference	5, 10, 20, 25, 50, 100	10, 20, 50, 100, 200
Display, digit height	Backlit LCD display, 24 mm	Backlit LCD display, 52 mm
Additional functions	Totalising, HOLD function, printing of time. KCP Only possible through RS-232; USB, Bluetooth, WiFi, Digital I/O, LAN on request	Totalising, HOLD function
Strain gauge load cells	87 - 1100 Ω	87 - 1600 Ω
Linearisation	3 points	3 points
Input voltage	12 V DC, 1000 mA	12 V, 500 mA
Permissible ambient temperature	-10 °C/40 °C	-10 °C/40 °C
Interface RS-232	yes*	KFN-A01, € 225,-
Interface RS-485	-	-
Interface USB	KIB-A03*, € 120,-	-
Interface Bluetooth	KIB-A04, € 110,-	-
WiFi	KIB-A10*, € 130,-	-
SWITCH (DIGITAL I/O)	-	-
LAN	KIB-A02*, € 165,-	-
Alibi memory	KIB-A01, € 175,-	-
Analogue module	-	0-10V: KERN KFB-A04, € 170,-; 4-20 mA: KERN KFB-A05, € 170,-;
Stand	EOC-A05, € 65,-	BFS-A07, € 170,-
Benchtop stand for display device/wall mount	EOC-A04, € 33,-	yes/yes
Protective working cover	EOC-A01S05, € 55,-	-
Rechargeable battery pack	KFB-A01, € 40,-	GAB-A04, € 42,-
Operating/charging time	up to 43 h/3 h	up to 35 h/12 h
Dimensions Housing W×D×H	268×115×70 mm	266×165×96 mm
Net weight	0,8 kg	2,6 kg
Price, excl. of VAT, ex works, €	220,-	360,-

- * not possible in combination with verification. When installing the Bluetooth data interface, the RS-232 data interface can no longer be used
- ** not possible in combination with signal lamp. When installing the analogue module, the RS-232 data interface can no longer be used

! *** ONLY WHILE STOCKS LAST



- Simplified battery replacement through easily-accessible housing. Particularly advantageous for models with optional verification, as the verification seal remains intact
- With Real Time Clock as standard: Enables you to log the weighing results with accurate time information. Even if the power supply is interrupted, the balance can continue to work with the correct time

Accessories

- Stand to elevate display device, height of stand approx. 1040 mm, KERN BFS-A07, € 170,-
- Internal rechargeable battery pack, operating time up to 48 h without backlight, charging time approx. 8 h, KERN YKR-01, € 35,-
- External data interface RS-232, interface cable included, KERN KUP-01, € 60,-
- External data interface USB, interface cable included, KERN KUP-03, € 75,-
- External data interface Ethernet, KERN KUP-04, € 115,-
- External data interface WiFi, interface cable included, KERN KUP-05, € 75,-
- Bluetooth interface adapter, KERN KUP-06, € 99,-
- Analogue module, KERN KUP-08, € 170,-
- *Extension box for connecting up to three interfaces in parallel, KERN KUP-13, € 75,-
- Memory module (alibi memory), KERN YMM-04, € 80,-
- Signal lamp for visual support of weighing with tolerance range, connection is only possible in combination with KUP-01 (RS 232 interface), KERN CFS-A03, € 310,-

Display device with up to three interfaces and optional verification

Features

- Standardised, convenient KERN concept of operation, consistency across products in terms of design, menu structure, button functions, interface connection and interface protocol
- Industry 4.0: Data and control commands can be exchanged through the KERN Universal Port using one interface, which can be connected to the housing, or through three parallel interfaces using the KUP Extension box
- The following interfaces are available as an option: RS-232, USB, Analogue module, Ethernet, WiFi, Bluetooth

- Each interface can be set up separately, e.g.:
 - Interface 1 (WiFi): Continuous sending to PC for documentation of a process
 - Interface 2 (RS 232): Print stable weight
 - Interface 3 (analogue module): Controlling a device when the target weight is reached
- Available as an option with alibi memory for paperless archiving of weighing results. This also means the results of weighings with mandatory verification can be electronically evaluated and processed further
- Data query and remote control of the balance using a computer or CRM/ERP systems using the KERN Communication Protocol

13

STANDARD	OPTION	FACTORY

Features	Model KERN KFC-TM
Display (segments)	6
EU type approval	yes
Resolution (verifiable)	3.000 / 2 × 3.000
Resolution (non verifiable)	100 - 999.999
Weighing capacities	single-range / 2 × multi-range / 2 × multi-division
Weighing units	kg, g, lb, ffa, PCS, % Verifiable: kg, g
Piece counting with reference	5, 10, 20, 50, n
Display, digit height	50 mm
Strain gauge load cells	87 - 1100 Ω
Linearisation (points)	2 / 3 / 5
Input voltage	110 V - 240 V AC
Accu operation time - without backlight	48 h
Accu charging time	8 h
Dimensions Housing W×D×H	220×145×65 mm
Net weight	0,7 kg
Permissible ambient temperature	-10°C/40°C
Price, excl. of VAT, ex works, €	230,-



Accessories

- Internal rechargeable battery pack, operating time up to 48 h without backlight, charging time approx. 8 h, KERN YKR-01, € 35,-
- GB mains adapter, cable length 1,5 m, KERN KXS-A06, € 109,-
- Stand to elevate display device, height of stand approx. 1040 mm, KERN BFS-A07, € 170,-
- Internal data interface RS-232, interface cable included, KERN KUM-01, € 120,-
- Internal data interface USB, interface cable included, KERN KUM-03, € 120,-
- Internal data interface Ethernet, interface cable included, KERN KUM-04, € 165,-
- Internal data interface WiFi, KERN KUM-05, € 95,-
- Internal data interface Bluetooth, KERN KUM-06, € 135,-
- Analogue module, KERN KUM-08, € 145,-
- Memory module with real time clock (alibi memory), KERN YMM-06, € 160,-

*Note: only two wired connections (RS-232, Ethernet, USB or analogue module) and two wireless connections (WiFi or Bluetooth) can be used at the same time

Stainless steel display device with IP68 dust and spray protection and up to four interfaces

Features

- With dust and spray protection (IP68), which makes it ideal for use in industry and outdoors
- Standardised, convenient KERN concept of operation, consistency across products in terms of design, menu structure, button functions, interface connection and interface protocol
- Industry 4.0: The exchange of data and control commands is optional using up to four interfaces to suit individual requirements: two wired connections (RS 232, Ethernet, USB or analogue module) and two wireless connections (WiFi or Bluetooth)

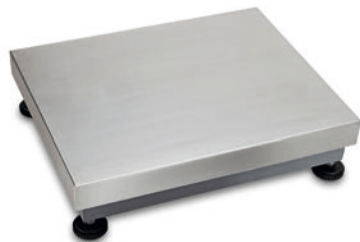
- Each interface can be set up separately, e.g.:
 - Interface 1 (WiFi): Continuous sending to PC for documentation of a process
 - Interface 2 (RS-232): Print stable weight
 - Interface 3 (analogue module): Controlling a device when the target weight is reached
 - Interface 4 (Bluetooth): Continuous sending to a tablet to monitor a process
- Data query and remote control of the balance using a computer or CRM/ERP systems using the KERN Communication Protocol
- Available as an option with alibi memory for paperless archiving of weighing results. This also means the results of weighings with mandatory verification can be electronically evaluated and processed further



Features

Model KERN KXC-TM

Display (segments)	6
EU type approval	yes
Resolution (verifiable)	3.000 / 2 × 3.000
Resolution (non verifiable)	100 - 999.999
Weighing capacities	single-range / 2 × multi-range / 2 × multi-division
Weighing units	kg, g, lb, ffa, PCS, %
Piece counting with reference	5, 10, 20, 50, n
Display, digit height	48 mm
Strain gauge load cells	87 - 1100 Ω
Linearisation (points)	2 / 3 / 5
Input voltage	110 V - 240 V AC
Accu operation time - without backlight	48 h
Accu charging time	8 h
Dimensions Housing W×D×H	232×150×80 mm
Net weight	2,6 kg
Permissible ambient temperature	-10°C/40°C
Price, excl. of VAT, ex works, €	400,-



1 KERN KBP-V20 IP65

Platform

Features

- Stainless steel-weighing plate, **A** painted steel base
- 1 load cell, aluminium, silicone-coated, IP65, OIML-R60-approved, class III, 3000 e
- Level indicator and levelling feet for precise levelling of the scale, fitted as standard
- Preparation for easy assembly of the ESD earthing kit on the weighing bridge



STANDARD

IP 65 1 DAY 2 DAYS

KPB 600



2 KERN KFP-V20 IP65

Platform

Features

- Stainless steel-weighing plate, **B** painted steel base
- 1 load cell, aluminium, silicone-coated, IP65, OIML-R60-approved, class III, 3000 e
- Level indicator and levelling feet for precise levelling of the scale, fitted as standard



STANDARD

IP 65 1 DAY 2 DAYS

KPB 600



3 KERN KXP-V20 IP65

Platform

Features

- Stainless steel-weighing plate, **C** painted steel base, extremely rigid, wing design
- 1 load cell, aluminium, silicone-coated, IP65, OIML-R60-approved, class III, 3000 e
- Level indicator and levelling feet for precise levelling of the scale, fitted as standard



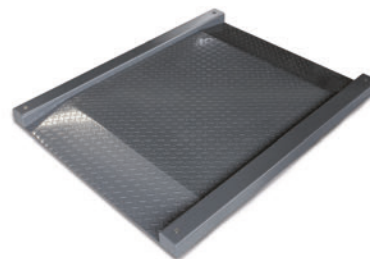
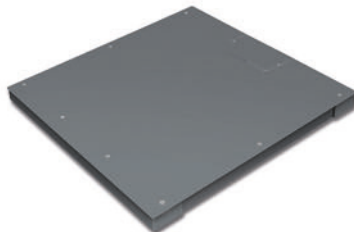
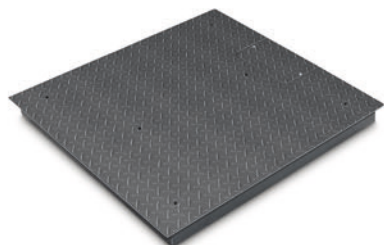
STANDARD

IP 65 1 DAY



Model	Weighing capacity	Readability	Verification value	Minimal load	Cable length	Net weight	Weighing plate	Price excl. of VAT ex works €
	[Max] kg	[d] g	[e] g	[Min] g	approx. m	approx. kg	W×D×H mm	
1 Platform KBP-V20 IP65								
KBP 6V20LM	3 6	0,2	1 2	20 40	2,5	3,8	300×300×110	200,-
KBP 15V20M	6 15	0,5	2 5	40 100	2,5	3,8	300×240×110	200,-
KBP 15V20LM	6 15	0,5	2 5	40 100	2,5	7	400×300×110	220,-
KBP 30V20M	15 30	1	5 10	100 200	2,5	7	400×300×110	220,-
KBP 60V20M	30 60	2	10 20	200 400	2,5	7	400×300×110	230,-
KBP 60V20LM	30 60	2	10 20	200 400	2,5	10	500×400×120	290,-
KBP 150V20M	60 150	5	20 50	400 1000	2,5	10	500×400×120	320,-
KBP 150V20LM	60 150	5	20 50	400 1000	2,5	19	650×500×150	480,-
KBP 300V20M	150 300	10	50 100	1000 2000	2,5	19	650×500×150	480,-
KBP 600V20M	300 600	20	100 200	2000 4000	2,5	42	800×600×200	680,-
2 Platform KFP-V20 IP65								
KFP 3V20M	3	0,1	1	20	2,5	3,4	230×230×103	205,-
KFP 6V20M	6	0,2	1 2	20 40	2,5	4,4	230×230×103	205,-
KFP 6V20LM	6	0,2	1 2	20 40	2,5	3,8	300×240×105	250,-
KFP 15V20M	6 15	0,5	2 5	40 100	2,5	3,8	300×240×105	285,-
KFP 15V20LM	6 15	0,5	2 5	40 100	2,5	7	400×300×114	315,-
KFP 30V20SM	15 30	1	5 10	100 200	2,5	3,8	300×240×105	250,-
KFP 30V20M	15 30	1	5 10	20	2,5	7	400×300×114	315,-
KFP 30V20LM	15 30	1	5 10	20	2,5	10	500×400×124	395,-
KFP 60V20M	30 60	2	10 20	200 400	2,5	7	400×300×114	330,-
KFP 60V20LM	30 60	2	10 20	200 400	2,5	10	500×400×124	405,-
KFP 150V20M	60 150	5	20 50	400 1000	2,5	10	500×400×124	415,-
KFP 150V20LM	60 150	5	20 50	400 1000	2,5	19	650×500×136	600,-
KFP 300V20M	150 300	10	50 100	1000 2000	2,5	19	650×500×136	600,-
KFP 600V20AM	600	20	200	4000	2,5	42	800×600×189	910,-
3 Platform KXP-V20 IP65								
KXP 6V20LM*	3 6	0,2	1 2	20 40	3	3,8	300×240×90	310,-
KXP 15V20M*	6 15	0,5	2 5	40 100	3	6	300×240×90	320,-
KXP 15V20LM*	6 15	0,5	2 5	40 100	3	8	400×300×90	430,-
KXP 30V20M*	15 30	1	5 10	100 200	3	8	400×300×90	430,-
KXP 30V20LM*	15 30	1	5 10	100 200	3	22	500×400×125	570,-
KXP 60V20M*	30 60	2	10 20	200 400	3	11	400×300×90	440,-
KXP 60V20LM*	30 60	2	10 20	200 400	3	17	500×400×125	600,-
KXP 150V20M*	60 150	5	20 50	400 1000	3	18	500×400×125	570,-
KXP 150V20LM*	60 150	5	20 50	400 1000	3	34	650×500×135	710,-
KXP 300V20M*	150 300	10	50 100	1000 2000	3	34	650×500×135	710,-

* ONLY WHILE STOCKS LAST!



4 KERN KIP-V20M

Weighing Bridge


Features

- Weighing bridge with non-slip chequer plate, lacquered, welded
- 4 Load cells, steel, silicone-coated, IP67, OIML-R60-approval for verification, class III, 3000 e
- Can be built in using pit frames (optional)
- Level indicator and levelling feet for precise levelling of the scale
- Easy access to the junction box from the top
- Comfortable levelling of the weighing bridge from the top

5 KERN KFP-V20 IP67

Weighing Bridge

Features

-  Weighing plate screwed on from the top (models with [Max] ≤ 1500 kg), so it easy to remove, hygienic and easy to clean.
- Lacquered steel weighing bridge, weighing plate size 1500×1500×130 mm corrugated steel plate. Extremely resistant to bending due to material thickness
- 4 Load cells, steel, silicone-coated, IP67, OIML-R60-approval for verification, class III, 3000 e
- Can be built in using pit frames (optional)
- Level indicator and levelling feet for precise levelling of the scale
- Easy access to the junction box from the top
- Comfortable levelling of the weighing bridge from the top

6 KERN KFD-V20

Weighing Bridge

Features

- Weighing bridge made of non-slip corrugated steel plate, lacquered, two access ramps integrated, extremely resistant to bending
- Extremely flat construction to facilitate access: access height only 45 mm
- 4 Load cells, alloy steel, silicone-coated, IP67, OIML-R60-approved class III, 3000 e



STANDARD FACTORY


  

STANDARD FACTORY

STANDARD FACTORY

Model	Weighing range [Max] kg	Readability [d] g	Verification value [e] g	Min. load [Min] g	Cable length approx. m	Net weight approx. kg	Weighing plate W×D×H mm	Price excl. VAT, ex works €
4 Weighing bridge KIP-V20M								
KIP 1500V20SM	1500	500	500	10000	5	130	1000×1000×108	1170,-
KIP 1500V20EM	1500	500	500	10000	5	140	1200×1000×108	1250,-
KIP 1500V20M	1500	500	500	10000	5	150	1500×1200×108	1550,-
KIP 3000V20M	3000	1000	1000	20000	5	150	1500×1200×108	1550,-
KIP 3000V20LM	3000	1000	1000	20000	5	180	1500×1500×108	1780,-
5 Weighing bridge KFP-V20 IP67								
KFP 1500V20SNM 	1500	500	500	10000	5	100	1000×1000×85	1370,-
KFP 1500V20NM	1500	500	500	10000	5	135	1500×1250×90	1910,-
KFP 3000V20NM	3000	1000	1000	20000	5	135	1500×1250×90	1860,-
KFP 3000V20LNM	3000	1000	1000	20000	5	155	1500×1500×80	2150,-
6 Weighing bridge KFD-V20								
KFD 600V20M*	600	200	200	4000	5	125	1600×1200×78	1860,-
KFD 600V20LM*	600	200	200	4000	5	155	1800×1400×80	2170,-
KFD 1500V20M*	1500	500	500	10000	5	125	1600×1200×78	1860,-
KFD 1500V20LM*	1500	500	500	10000	5	175	1800×1400×78	2170,-

 * ONLY WHILE STOCKS LAST!  New model



7 KERN KFA-V20

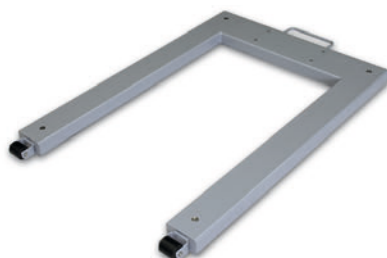
Weighing Beams

Features

- Weighing beams and painted steel base
- 4 load cells, alloy steel, silicone-coated, IP67
- Levelling feet for precise levelling of the weighing beams
- Connection cable, length 5 m
- **D** Image below: Version up to 6 t available. Each weighing beam has a roller and handle for easy transport of the scale (KERN KFA-L)
- **Special feature:** model with short weighing beams, ideal for weighing compact items or animals in transport boxes
 - ▶ KERN KFA-600V20S
- Accessories see KERN UFA



STANDARD



8 KERN KFU-V20/V30

U-Weighing Bridge

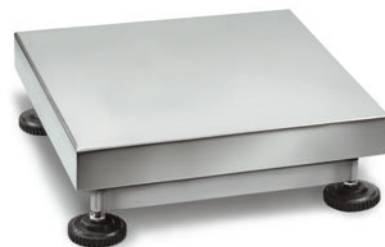
Features

- Load range: painted steel (V20), stainless steel (V30) height 90 mm
- 4 load cells, alloy steel, silicone-coated, IP67, OIML-R60-approval for verification, class III, 3000 e
- 2 rollers and handle for easy transport of the scale

STANDARD



FACTORY



9 KERN KFP-V30

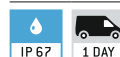
Platform

Features

- Stainless steel-weighing plate, **E** stainless steel substructure
- 1 load cell, stainless steel, silicone-coated, IP67, OIML-approved, class III, 3000 e
- Level indicator and levelling feet for precise levelling of the scale



STANDARD



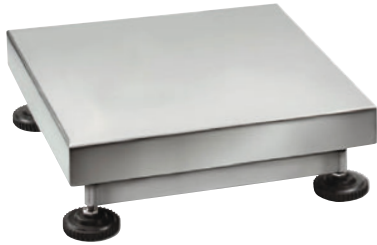
FACTORY



13

Model	Weighing range [Max] kg	Readability [d] g	Verification value [e] g	Min. load [Min] g	Cable length approx. m	Net weight approx. kg	Weighing plate W×D×H mm	Price excl. VAT, ex works €
7 Weighing beams KFA-V20								
KFA 600V20S*	600	200	-	-	5	30	800×120×100	820,-
KFA 1500V20*	1500	500	-	-	5	36	1200×120×100	900,-
KFA 3000V20*	3000	1000	-	-	5	36	1200×120×100	1100,-
KFA 3000V20L*	3000	1000	-	-	5	65	2000×120×100	1350,-
KFA 6000V20*	6000	2000	-	-	5	85	1200×160×80	1470,-
KFA 6000V20L*	6000	2000	-	-	5	125	2100×160×85	1870,-
8 U-Weighing bridge KFU-V20								
KFU 600V20M	600	200	200	4000	5	55	840×1350×90	1130,-
KFU 1500V20M	1500	500	500	10000	5	55	840×1350×90	1100,-
8 Stainless steel U-Weighing bridge KFU-V30								
KFU 1500V30M*	1500	500	500	10000	5	55	840×1350×90	1730,-
9 Stainless steel platform KFP-V30								
KFP 15V30M	15	1	5	100	2,5	5,0	300×240×100	700,-
KFP 30V30M	30	1	10	200	2,5	10	400×300×128	760,-
KFP 30V30SM	30	2	10	200	2,5	5,0	300×240×100	690,-
KFP 60V30M	60	2	20	400	2,5	10	400×300×128	760,-
KFP 60V30LM	60	5	20	400	2,5	10	500×400×137	950,-
KFP 60V30XLM	60	5	20	400	2,5	22	650×500×142	1370,-
KFP 150V30SM	150	10	50	1000	2,5	10	400×300×128	710,-
KFP 150V30M	150	10	50	1000	2,5	10	500×400×137	940,-
KFP 150V30LM	150	10	50	1000	2,5	22	650×500×135	1280,-
KFP 300V30M	300	20	100	2000	2,5	22	650×500×135	1200,-

E * ONLY WHILE STOCKS LAST!

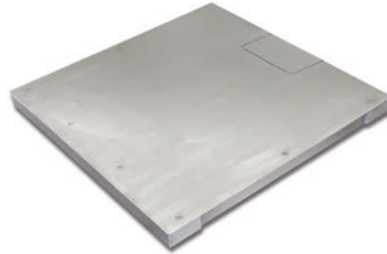


10 KERN KFP-V40 IP68

Stainless steel platform

Features

- Platform: entirely out of stainless steel
- 1 load cell, stainless steel, encapsulated, IP68, OIML R60 approval for verification, class III, 3000 e
- Level indicator and levelling feet for accurate levelling of the balance



11 KERN KFP-V40 IP68

Stainless steel weighing bridge

Características

- Weighing bridge entirely made of stainless steel, extremely resistant to bending because of its high material thickness
- **G** Weighing plate fixed with stainless steel screws, for easier access to the loadcells from above
- 4 Load cells, stainless steel, encapsulated, IP68, OIML R60 approval for verification, Class III, 3000 e
- Can be built in using pit frames (optional)
- Level indicator and levelling feet for accurate levelling of the balance
- Comfortable levelling of the weighing bridge from the top



12 KERN KFD-V40 IP68

Stainless steel weighing bridge

Características

- Weighing bridge made from stainless steel, two integrated access ramps, extremely resistant to bending
- Extremely flat construction to facilitate access: access height only 45 mm
- 4 Load cells, stainless steel, encapsulated, IP68, OIML R60 approval for verification, Class III, 3000 e
- Level indicator and levelling feet for accurate levelling of the balance



STANDARD FACTORY

IP 68 1 DAY **M**

STANDARD FACTORY

IP 68 2 DAYS **M**

STANDARD FACTORY

IP 68 2 DAYS **M**

Model	Weighing capacity	Readability	Verification value	Minimal load	Cable length	Net weight	Weighing plate	Price
	[Max] kg	[d] g	[e] g	[Min] g	approx. m	approx. kg	W×D×H mm	excl. of VAT ex works €
10 Stainless steel platform KFP-V40 IP68								
KFP 6V40M	6	0,5	1 2	20	3	5,0	300×240×104	900,-
KFP 15V40M	15	1	2 5	40	3	5,0	300×240×104	900,-
KFP 15V40LM	15	1	2 5	40	3	5,0	400×300×107	930,-
KFP 30V40M	30	2	5 10	100	3	8	400×300×107	930,-
KFP 30V40LM	30	2	5 10	100	3	8	500×400×107	1010,-
KFP 60V40M	60	5	10 20	200	3	8	400×300×120	950,-
KFP 60V40LM	60	5	10 20	200	3	10	500×400×124	1050,-
KFP 150V40M	150	10	20 50	400	3	10	500×400×124	1050,-
KFP 150V40LM	150	10	20 50	400	3	22	650×500×136	1330,-
KFP 300V40M	300	20	50 100	1000 2000	3	22	650×500×136	1250,-
11 Stainless steel weighing bridge KFP-V40 IP68								
KFP 3000V40M	3000	1000	1000	20000	5	135	1500×1250×80	4000,-
12 Stainless steel weighing bridge KFD-V40 IP68								
KFD 600V40M*	600	200	200	4000	5	130	1600×1200×78	3840,-
KFD 1500V40M*	1500	500	500	10000	5	130	1600×1220×95	3790,-

1 * ONLY WHILE STOCKS LAST!



CP P4 · CP Y4
Single-point load cell made from anodised aluminium

Technical data

- CP P4: Accuracy in accordance with OIML R60 C3
- CP Y4: Accuracy in accordance with OIML R60 C2
- CE and RoHS compliant
- Protection against dust and water splashes IP65 (in accordance with EN 60529)
- Aluminium, anodised
- Suitable for price-computing scales, bench scales, platform scales, etc.
- Maximum platform size: 200×200 mm
- Nominal sensitivity: 0,9 mV/V
- 4-wire connection
- Cable length approx. 0,4 m

CP P1 · CP Y1
Single-point load cell made from anodised aluminium

Technical data

- CP P1: Accuracy in accordance with OIML R60 C3
- CP Y1: Accuracy in accordance with OIML R60 C2
- CE and RoHS compliant
- Protection against dust and water splashes IP65 (in accordance with EN 60529)
- Aluminium, anodised
- Suitable for price-computing scales, bench scales, platform scales, etc.
- Maximum platform size: 250×350 mm
- Nominal sensitivity: 2 mV/V
- 4-wire connection
- Note: Version in accordance with OIML R60 C4 or C5 on request

CP P3
Single-point load cell made from anodised aluminium

Technical data

- Accuracy in accordance with OIML R60 C3
- CE and RoHS compliant
- Protection against dust and water splashes IP65 (in accordance with EN 60529)
- Aluminium, anodised
- Suitable for price-computing scales, bench scales, platform scales, etc.
- Maximum platform size: 350×400 mm
- Nominal sensitivity: 2 mV/V
- 4-wire connection
- Cable length approx. 3 m
- Note: Version in accordance with OIML R60 C4 or C5 on request

STANDARD: IP 65, 1 DAY
OPTION: DAkkS +3 DAYS, ISO +4 DAYS

STANDARD: IP 65, M, 1 DAY
OPTION: DAkkS +3 DAYS, ISO +4 DAYS
CP P1

STANDARD: IP 65, 1 DAY
OPTION: DAkkS +3 DAYS, ISO +4 DAYS

Model	Nominal load kg	Price excl. of VAT ex works €
KERN		
CP 300-0P4	0,3	65,-
CP 600-0P4	0,6	65,-
CP 300-0Y4	0,3	55,-
CP 1500-0Y4	1,5	55,-
CP 3000-0Y4	3	55,-

Model	Nominal load kg	Cable length m	Price excl. of VAT ex works €
KERN			
CP 3-3P1	3	0,4	60,-
CP 3-2-3P1	3	2	74,-
CP 5-3P1	5	0,4	60,-
CP 6-3P1	6	0,4	60,-
CP 8-3P1	8	0,4	60,-
CP 10-3P1	10	0,4	60,-
CP 10-3-3P1	10	3	78,-
CP 15-3P1	15	0,4	60,-
CP 15-3-3P1	15	3	78,-
CP 20-3P1	20	0,4	60,-
CP 30-3P1	30	0,4	60,-
CP 35-3P1	35	0,4	60,-
CP 35-3-3P1	35	3	78,-
CP 40-3P1	40	0,4	60,-
CP 50-3P1	50	0,4	60,-
CP 50-2-3P1	50	2	74,-
CP 3-2Y1	3	0,45	33,-
CP 5-2Y1	5	0,45	33,-
CP 10-2Y1	10	0,45	33,-
CP 15-2Y1	15	0,45	33,-
CP 20-2Y1	20	0,45	33,-
CP 30-2Y1	30	0,45	33,-
CP 100-3-3Y1 <small>NEW</small>	100	3	50,-

NEW New model

Model	Nominal load kg	Price excl. of VAT ex works €
KERN		
CP 30-3P3	30	76,-
CP 40-3P3	40	76,-
CP 50-3P3	50	76,-
CP 75-3P3	75	76,-
CP 100-3P3	100	77,-

Tip: Further details and technical data sheet as well as an extensive range of accessories can be found at www.kern-sohn.com



CP P2
Single-point load cell
made of aluminium

Technical data

- Accuracy in accordance with OIML R60 C3
- RoHS compliant
- Protection against dust and water splashes IP65 (in accordance with EN 60529)
- Aluminium alloy, anodized
- Suitable for price computing scales, bench scales etc.
- Maximum platform size
CP P2, 100 – 300 kg: 400×400 mm
CP P2, 400 – 500 kg: 450×450 mm
- CP P2: 4-wire connection
- Nominal sensitivity: 2 mV/V
- Cable length
CP P2: 2 m
- Note: Version in accordance with OIML R60 C4 or C5 on request

CP P7
Single-Point load cell
made from stainless steel

Technical data

- Accuracy in accordance with OIML R60 C3
- RoHS compliant
- Protection against dust and water splashes IP67 (in accordance with EN 60529)
- Stainless steel
- Area of application: Mass as well as compressive force measurement in harsh environmental conditions
- Suitable for price computing scales, bench scales etc.
- Maximum platform size: 400×400 mm
- 6-wire connection
- Nominal sensitivity: 2 mV/V
- Cable length: 1 m
- Note: Version in accordance with OIML R60 C4 on request

CP P8
Single-point load cell
made of aluminium

Technical data

- Accuracy in accordance with OIML R60 C3
- RoHS compliant
- Protection against dust and water splashes IP65 (in accordance with EN 60529)
- Aluminium alloy, anodized
- Suitable for price computing scales, bench scales etc.
- Maximum platform size 600×600 mm
- 6-wire connection
- Nominal sensitivity: 2 mV/V
- Cable length 3 m
- Note: Version in accordance with OIML R60 C4 or C5 on request

Tip: Further details and technical data sheet as well as an extensive range of accessories can be found at www.kern-sohn.com

STANDARD OPTION

IP 65 1 DAY DAkkS ISO
+3 DAYS +4 DAYS

STANDARD OPTION

IP 67 1 DAY DAkkS ISO
+3 DAYS +4 DAYS

STANDARD OPTION

IP 65 1 DAY DAkkS ISO
+3 DAYS +4 DAYS

Model	Nominal load	Price excl. of VAT ex works
KERN	kg	€
CP 100-3P2	100	81,-
CP 150-3P2	150	81,-
CP 200-3P2	200	81,-
CP 300-3P2	300	81,-
CP 400-3P2	400	81,-
CP 500-3P2	500	81,-

Model	Nominal load	Price excl. of VAT ex works
KERN	kg	€
CP 30-3P7	30	270,-
CP 50-3P7	50	270,-
CP 75-3P7	75	270,-
CP 100-3P7	100	270,-
CP 150-3P7	150	270,-

Model	Nominal load	Price excl. of VAT ex works
KERN	kg	€
CP 50-3P8	50	123,-
CP 100-3P8	100	123,-
CP 150-3P8	150	123,-
CP 200-3P8	200	123,-
CP 250-3P8	250	123,-
CP 300-3P8	300	123,-
CP 500-3P8	500	123,-
CP 600-3P8	600	123,-



CR Q1
Load cell made from stainless steel

Technical data

- Accuracy in accordance with OIML R60 C1
- RoHS compliant
- Protection against dust and water splashes IP68 (in accordance with EN 60529), hermetically encapsulated
- Stainless steel
- Area of application: Measuring mass as well as compressive force
- Suitable for vehicle scales, weigh hoppers, vehicle testing equipment, test stands
- Nominal sensitivity: 2 mV/V
- Cable length 10 m

Accessories

- Load corner, steel, galvanised, suitable for CR Q1
 - [Max] ≤ 10 t: SAUTER CE Q42901, € 265,-
 - [Max] ≥ 20 t: SAUTER CE Q42902, € 420,-
- Load corner, steel, stainless, suitable for CR Q1
 - [Max] ≤ 10 t: SAUTER CE RQ42901, € 475,-
 - [Max] ≥ 20 t: SAUTER CE RQ42902, € 810,-



STANDARD OPTION

IP 68 1 DAY ISO +4 DAYS

[Max] ≤ 25 t / 250 kN

Model	Nominal load	Price excl. of VAT ex works €
KERN		
CR 2500-1Q1	2,5 t/25 kN	285,-
CR 5000-1Q1	5 t/50 kN	285,-
CR 10000-1Q1	10 t/100 kN	285,-
CR 20000-1Q1	20 t/200 kN	560,-
CR 30000-1Q1	30 t/300 kN	560,-



CR P1
Load cell made from stainless steel

Technical data

- Accuracy in accordance with OIML R60 C3
- RoHS compliant
- Protection against dust and water splashes IP68 (in accordance with EN 60529), hermetically encapsulated
- Stainless steel
- Area of application: Measuring mass as well as compressive force
- Suitable for weighbridges, handing scales, silo scales and other types of balances, test stands, etc.
- Nominal sensitivity: 1 – 2 mV/V, depending on nominal load
- Cable length
 - [Max] ≤ 1000 kg: 3 m
 - [Max] ≥ 2000 kg: 6 m

Accessories

- Load corner for CR 1000-3P1, CR 250-3P1, CR 500-3P1, steel, incl. pressure piece, SAUTER CE P244011, € 600,-
- Pressure piece for CR 1000-3P1, CR 250-3P1, CR 500-3P1, steel, SAUTER CE P244012, € 115,-
- Load corner for CR 2000-3P1, steel, stainless incl. pressure piece, SAUTER CE P244021, € 720,-
- Pressure piece for CR 2000-3P1, steel, stainless, SAUTER CE P244022, € 125,-

STANDARD OPTION

IP 68 4 DAYS DAKKS +3 DAYS ISO +4 DAYS

[Max] ≤ 500 kg / 5 kN

Model	Nominal load	Price excl. of VAT ex works €
KERN		
CR 60-3P1	60 kg/0,6 kN	930,-
CR 130-3P1	130 kg/1,3 kN	980,-
CR 250-3P1	250 kg/2,5 kN	890,-
CR 500-3P1	500 kg/5 kN	860,-
CR 1000-3P1	1000 kg/10 kN	860,-
CR 2000-3P1	2000 kg/20 kN	860,-



CR Y1
Load cell made from steel alloy

Technical data

- Accuracy in accordance with OIML R60 C1
- RoHS compliant
- High precision (comprehensive error 0,05 % F.S.)
- Protection against dust and water splashes IP68 (in accordance with EN 60529), hermetically encapsulated
- Stainless steel
- Area of application: for weight, tensile and compressive force measurement
- Suitable for weight measurement as well as force and force test stands
- Force transmission via pressure piece or threaded hole
- Nominal sensitivity: 2 mV/V
- Cable length: 3 m
- Pressure piece included with delivery
- Thread for pressure piece or other force application:
 - up to 5000 kg M16×1,5,
 - from 10000 kg M32×1,5

Tip: Further details and technical data sheet as well as an extensive range of accessories can be found at www.kern-sohn.com

STANDARD OPTION

IP 68 1 DAY DAKKS +3 DAYS ISO +4 DAYS

[Max] ≤ 500 kg / 5 kN

Model	Nominal load	Price excl. of VAT ex works €
KERN		
CR 500-1Y1	0,5 t/5 kN	270,-
CR 1000-1Y1	1 t/10 kN	270,-
CR 5000-1Y1	5 t/50 kN	270,-
CR 10000-1Y1	10 t/100 kN	430,-
CR 20000-1Y1	20 t/200 kN	430,-



CB Q1 · CB Q2

Bending beam and shear beam load cell made from stainless steel

Technical data

- Accuracy in accordance with OIML R60 C3
- CE and RoHS compliant
- Protection against dust and water splashes IP68/IP69K (in accordance with EN 60529), welded to create a hermetic seal
- Stainless steel
- Area of application: Measuring mass as well as compressive force in harsh environments
- Suitable for platform scales, weigh hoppers, floor scales and other weighing devices
- 4-wire connection
- Nominal sensitivity: 2 mV/V
- Cable length: 3 m
- Note: Accuracy class OIML R60 C6 or EX version on request



STANDARD			OPTION	
IP 68	IP 69K	1 DAY	+3 DAYS	+4 DAYS
[Max.] ≤ 500 kg				

Model	Nominal load kg	Price excl. of VAT ex works €
KERN		
CB 5-3Q1	5	230,-
CB 10-3Q1	10	230,-
CB 20-3Q1	20	230,-
CB 30-3Q1	30	230,-
CB 50-3Q1	50	230,-
CB 75-3Q1	75	230,-
CB 100-3Q1	100	230,-
CB 150-3Q1	150	230,-
CB 200-3Q1	200	230,-
CB 250-3Q1	250	230,-
CB 300-3Q1	300	230,-
CB 500-3Q1	500	230,-
CB 750-3Q2*	750	240,-
CB 1000-3Q2*	1000	240,-
CB 1500-3Q2*	1500	240,-

1 * ONLY WHILE STOCKS LAST

CB P1

Bending beams made from stainless steel

Technical data

- Accuracy in accordance with OIML R60 C3
- CE and RoHS compliant
- Protection against dust and water splashes IP67 (in accordance with EN 60529), hermetically encapsulated
- Nickel-plated steel
- Area of application: Measuring mass as well as compressive force in harsh environments
- Suitable for platform scales, silo scales, bed scales and other types of scales
- 4-wire connection
- Nominal sensitivity: 3 mV/V
- Cable length: 3 m



STANDARD			OPTION	
IP 67	M	1 DAY	+3 DAYS	+4 DAYS

Model	Nominal load kg	Price excl. of VAT ex works €
KERN		
CB 100-3P1	100	114,-
CB 250-3P1	250	114,-

Accessories CB Q1 · CB Q2

- Traction device, steel, galvanised, suitable for CB Q1, SAUTER CE Q30901, € 85,-
- Traction device, steel, stainless, suitable for CB Q2, SAUTER CE Q34905, € 90,-
- **1** Base plate, steel, galvanised, suitable for CB Q1, SAUTER CE Q30903, € 100,-
- Base plate, steel, stainless, suitable for CB Q1, SAUTER CE RQ30903, € 190,-
- Base plate, steel, stainless, suitable for CB Q2, SAUTER CE Q34903, € 95,-
- **1** Bearing, steel, stainless, suitable for CB Q1 5 – 50 kg, SAUTER CE Q30904, € 120,- 75 – 300 kg, SAUTER CE Q30905, € 120,- CB 500-3Q1, SAUTER CE Q30906, € 205,-
- Bearing, steel, stainless, suitable for CB Q2, SAUTER CE Q34906, € 190,-
- Load corner, steel, stainless, suitable for CB Q1, SAUTER CE RQ30907, € 315,-
- Adjustable foot, steel, stainless, suitable for CB Q2, SAUTER CE Q34901, € 70,-

Accessories CB P1

- Adjustable foot, steel, nickel-plated, M12 thread, suitable for CB P1, SAUTER CE P2012, € 27,-
- **2** Load corner, steel, nickel-plated, suitable for CB P1, SAUTER CE P4022, € 195,-
- Distance plate for bending beams CB P1 made from steel, SAUTER CE P3012, € 9,-



CT Q1 Shear beam made from stainless steel

Technical data

- Accuracy in accordance with OIML R60 C3
- CE and RoHS compliant
- Protection against dust and water splashes IP68/IP69K (in accordance with EN 60529), welded to create a hermetic seal
- Stainless steel
- Area of application: Measuring mass as well as compressive force in harsh environments
- Suitable for platform scales, weigh hoppers, flush-mounted floor scales and other weighing devices
- 6-wire connection
- Nominal sensitivity: 2 mV/V
- Cable length: 5 m
- Note: EX version on request

CT P1 · CT P2 Shear beam made from stainless steel

Technical data

- Accuracy in accordance with OIML R60 C3
- CE and RoHS compliant
- Protection against dust and water splashes IP67 (in accordance with EN 60529), welded to create a hermetic seal
- Nickel-plated steel
- Area of application: Measuring mass as well as compressive force in harsh environments
- Suitable for platform scales, weigh hoppers, flush-mounted floor scales and other weighing devices
- 4-wire connection
- Nominal sensitivity: 3 mV/V
- Cable length
[Max] ≤ 1000 kg: 4 m
[Max] ≥ 1500 kg: 6 m
- CT P2: Delivery with calibrated sensitivity, when ordering several cells

Accessories CT Q1

- Base plate, steel, stainless, suitable for CT Q1: SAUTER CE RQ35911, € 200,-
CT 3000-3Q1, CT 5000-3Q1: SAUTER CE RQ35912, € 200,-
CT 7500-3Q1, CT 10000-3Q1: SAUTER CE RQ35919, € 860,-
- Bearing, steel, stainless, suitable for CT Q1: SAUTER CE RQ35909, € 165,-
CT 3000-3Q1, CT 5000-3Q1: SAUTER CE RQ35910, € 320,-
CT 7500-3Q1, CT 10000-3Q1: SAUTER CE RQ35918, € 390,-
- Load corner, steel, stainless, suitable for CT Q1: SAUTER CE RQ35902, € 420,-
- **1** Load corner, steel, stainless, suitable for CT 3000-3Q1, CT 5000-3Q1, SAUTER CE RQ35903, € 620,-

Accessories CT P1 · CT P2

- Load corner, steel, stainless, suitable for CT 10000-3P1, CT 10000-3P2, SAUTER CE P40210, € 510,-
- **2** Load corner, steel, nickel-plated, suitable for CT 500-3P1, CT 1000-3P1, CT 1500-3P1, SAUTER CE P4022, € 195,-
- Load corner, steel, nickel-plated, suitable for CT 2500-3P1, CT 3000-3P1, CT 5000-3P1, SAUTER CE P4025, € 260,-
- Adjustable foot, steel, nickel-plated, M12 thread, suitable for CT 500-3P1, CT 1000-3P1, CT 1500-3P1, SAUTER CE P2012, € 27,-
- Adjustable foot, steel, nickel-plated, M18 thread, suitable for CT 2500-3P1, CT 3000-3P1, CT 5000-3P1, SAUTER CE P2018, € 38,-
- Adjustable foot, steel, nickel-plated, M24 thread, suitable for CT 10000-3P1, SAUTER CE P2024, € 113,-
- Distance plate, suitable for CT 500-3P1, CT 500-3P2, CT 1000-3P1, CT 1000-3P2, CT 1500-3P1: SAUTER CE P3012, € 9,-
CT 2500-3P1, CT 3000-3P1, CT 3000-3P2, CT 5000-3P1, CT 5000-3P2: SAUTER CE P3015, € 10,-
CT 10000-3P1, CT 10000-3P2: SAUTER CE P30110, € 27,-



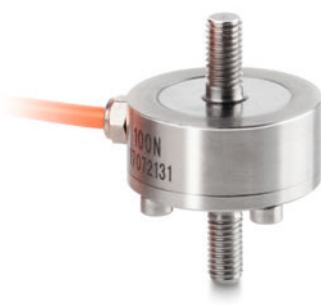
STANDARD: IP 68, IP 69K, 1 DAY
OPTION: DAKkS +3 DAYS, ISO +4 DAYS [Max] ≤ 500 kg



STANDARD: IP 67, M, 1 DAY
OPTION: DAKkS +3 DAYS, ISO +4 DAYS [Max] ≤ 500 kg

Model	Nominal load kg	Price excl. of VAT ex works €
KERN	kg	
CT 300-3Q1	300	220,-
CT 500-3Q1	500	220,-
CT 750-3Q1	750	220,-
CT 1000-3Q1	1000	220,-
CT 1500-3Q1	1500	220,-
CT 2000-3Q1	2000	220,-
CT 3000-3Q1	3000	435,-
CT 5000-3Q1	5000	435,-
CT 7500-3Q1	7500	570,-
CT 10000-3Q1	10000	570,-

Model	Nominal load kg	Price excl. of VAT ex works €
KERN	kg	
CT 500-3P1	500	98,-
CT 1000-3P1	1000	98,-
CT 1500-3P1	1500	98,-
CT 2500-3P1	2500	119,-
CT 3000-3P1	3000	119,-
CT 5000-3P1	5000	119,-
CT 10000-3P1	10000	173,-
CT 500-3P2	500	103,-
CT 1000-3P2	1000	103,-
CT 5000-3P2	5000	124,-
CT 3000-3P2	3000	125,-
CT 10000-3P2	10000	178,-



CO Y1
Miniature cylindrical load cell
made from stainless steel

Technical data

- Accuracy in accordance with OIML G5
- High precision (comprehensive Error 0,5 % F.S.)
- RoHS compliant
- Protection against dust and water splashes IP65
- Area of application: Compressive applications
- Suitable for weight measurement as well as force and force test stands
- Nominal sensitivity: 1,0 – 1,5 mV/V, depending on nominal load
- Cable length: 2 m

CO Y2
Miniature cylindrical load cell
made from stainless steel

Technical data

- Accuracy in accordance with OIML G5
- High level of accuracy (Comprehensive error 0,5 % F. S.)
- RoHS compliant
- Protection against dust and water splashes IP65
- Area of application: Tensile and compressive applications
- Suitable for weight measurement as well as force and force test stands
- Nominal sensitivity: 1,5 – 2 mV/V, depending on nominal load
- Cable length: 2 m

CO Y5
Tension and compression force measuring cell made from stainless steel

Technical data

- Accuracy in accordance with OIML R60 G1
- CE and RoHS compliant
- Protection against dust and water splashes IP66 (in accordance with EN 60529)
- Stainless steel
- Very low design
- Suitable for test stands, force gauges, automation systems, etc.
- 4-wire connection
- Nominal sensitivity:
CO 0.5-Y5, CO 1-Y5: 1 mV/V
CO 5-Y5, CO 10-Y5: 2 mV/V
- Cable length: 2 m

Tip: Further details and technical data sheet as well as an extensive range of accessories can be found at www.kern-sohn.com

STANDARD	OPTION
	<small>[Max] ≤ 500 kg/ 5 kN</small>

Model	Nominal load	Price excl. of VAT ex works €
KERN		
CO 10-Y1	10 kg/100 N	170,-
CO 20-Y1	20 kg/200 N	170,-
CO 50-Y1	50 kg/500 N	170,-
CO 100-Y1	100 kg/1 kN	170,-
CO 200-Y1	200 kg/2 kN	170,-
CO 500-Y1	500 kg/5 kN	200,-
CO 1000-Y1	1000 kg/10 kN	200,-
CO 2000-Y1	2000 kg/20 kN	235,-

STANDARD	OPTION
	<small>[Max] ≤ 500 kg/ 5 kN</small>

Model	Nominal load	Price excl. of VAT ex works €
KERN		
CO 10-Y2	10 kg/100 N	250,-
CO 20-Y2	20 kg/200 N	250,-
CO 50-Y2	50 kg/500 N	250,-
CO 100-Y2	100 kg/1 kN	310,-
CO 200-Y2	200 kg/2 kN	310,-
CO 500-Y2	500 kg/5 kN	310,-
CO 1000-Y2	1000 kg/10 kN	310,-
CO 2000-Y2	2000 kg/20 kN	345,-

STANDARD	OPTION
	<small>[Max] ≥ 1 kg/ 10 N</small>

Model	Nominal load	Price excl. of VAT ex works €
KERN		
CO 0.5-Y5	500 g/5 N	365,-
CO 1-Y5	1 kg/10 N	365,-
CO 5-Y5	5 kg/50 N	365,-
CO 10-Y5	10 kg/100 N	365,-



CJ P4



CJ P4PG



CJ X467



CJ X468

CJ P
Junction box for the connection of several measuring cells to an evaluation unit

Features

- Prepared for 4-wire and 6-wire measuring cells
- The robust aluminium diecast housing
- Protection against dust and water splashes IP65

CJ X
Junction box for the connection of several measuring cells to an evaluation unit

Features

- Prepared for 4-wire and 6-wire measuring cells

CJ X467

- Robust housing made of stainless steel with IP67 dust and spray protection

CJ X468

- The robust aluminium diecast housing, protection against dust and water splashes IP68

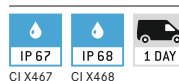
Tip: Further details and technical data sheet as well as an extensive range of accessories can be found at www.kern-sohn.com

STANDARD



Model	Number of connection options	Price excl. of VAT ex works €
KERN		
CJ P2	2	87,-
CJ P4	4	87,-
CJ P4PG	4	98,-

STANDARD



Model	Number of connection options	Price excl. of VAT ex works €
KERN		
CJ X467	4	220,-
CJ X468	4	130,-

The oldest Precision Balance Factory in Germany

KERN & SOHN GmbH

Balances, Test Weights, Microscopes,
DAkKS Calibration Laboratory

Ziegelei 1
72336 Balingen
Germany
Tel. +49 7433 9933-0
info@kern-sohn.com
www.kern-sohn.com

Discover the multifaceted World of Balances, Microscopes and Measuring Technology from KERN online: www.kern-sohn.com

- Full KERN & SAUTER Product Range
- Convenient 24/7 Ordering
- Selection of more than 5,000 Items across Weighing and Measuring Technology, Optical Instruments as well as Accessories and Services
- Extensive Information and useful Download Options
- Technical Product Data Sheets
- Operating Instructions
- Descriptive Image and Video Material
- Useful KERN Services
- Technical Glossary
- KERN Dealer Portal
- Practical Filter and Search Functions



Follow us on our social media channels too



Printed in Germany by KERN & SOHN GmbH
z-cb-en-kr-20251

